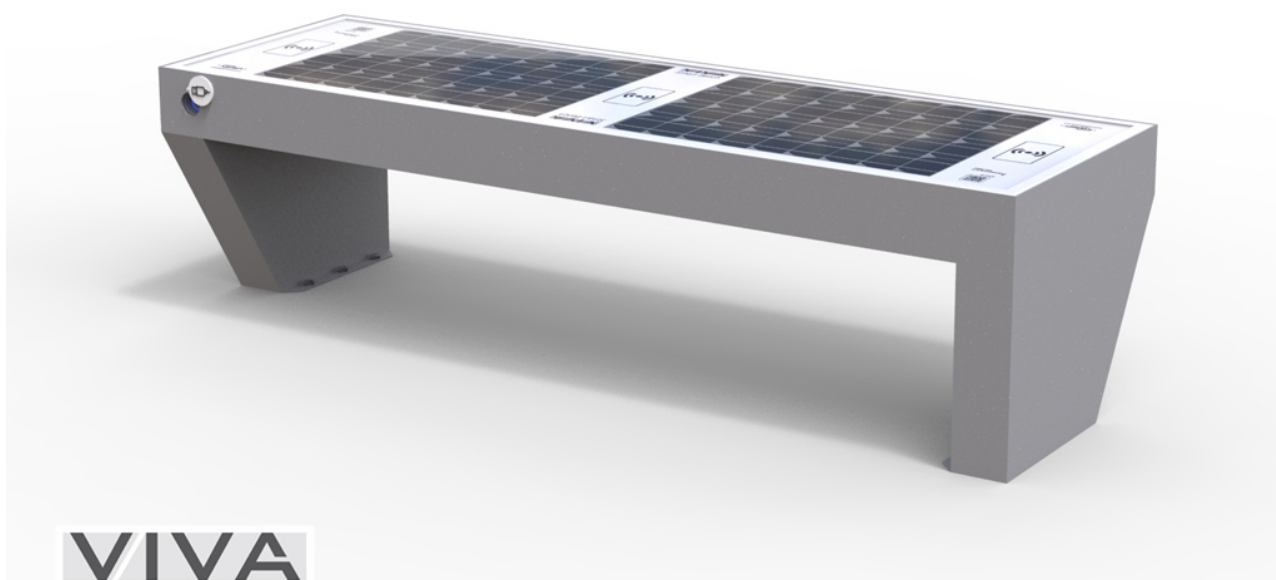


Cod. 311310

Smart VIVA FULL Intelligent Solar Powered Bench Charging
IOT ready, seat and backrest in recycled plastic 2,1m ,
WIRELESS recharge devices, USB, LED lighting



VIVA
Smart Bench

A smart city bench - **VIVA FULL** for charging smartphones and tablets.

General technical features:

- N° 2 30/10 thick, trapezoidal printed metal side supports;
- The seat and the back rest are made from 120 x 40 mm, milled STRONGPLAST (recycled plastic) boards, internally reinforced with 15 x 15 mm steel bars. The boards are bolted to the seat and back rest supports;
- SMART charging module equipped with MPPT technology with photovoltaic panel and batteries embedded in the bench structure

Version features:

- Equipped with 4 USB sockets for charging devices up to 2A and 3 wireless charger built into the structure;
- Neutral white LED backlight system;
- Local management and control system via WIFI connection or by dedicated CLOUD software with 12 month assistance (see assistance characteristics);
- Standard sensors for temperature, humidity, charging, discharging devices, weather sensing system with automatic stand-by;
- Self-management and consumption control system with error prediction and reports;
- 4G LTE Internet connection.
- Custom access point , WIFI integration with PORTAL custom USER and PAGE
- Sensor (see characteristics)

Installation and maintenance:

The trapezoidal legs of the bench are prepared for M10 steel bolt anchoring.

The removable smart module can be sent for maintenance without having to relocate the entire bench.

The surfaces are protected by a 5P cycle and powder coated. See specifications on the protection of materials.

Registered design, registered smart technology.

ZERO WIRE SYSTEM , the smart bench positioned in into sunny place provide all service without need wiring.

The new VIVA™ bench was created to modernize today's cities with innovative technologies in the context of control and use of specific functionalities aimed at satisfying the modern needs of citizens.

Thanks to its innumerable technological functions, these new benches become not only a resting place but also a meeting point, where it is possible to conceive a new way of living th city.

We can recharge our smart devices thanks to the side USB sockets, connect to wifi, get real-time information on traffic, smog, weather conditions, etc... communicating has never been so easy !

Ample space for customization.

The transversal skills of our team, the knowledge of materials and processing technologies allow us to tackle any custom project.

Through the cloud connection, the VIVA software manages the network of stations remotely on any device at any time.

Control and verification of the system from a single location.

Easily and efficiently manage all your smart workstations in real time, even in multi-user mode.

Check your workstations network and verify monitoring information sent.

Battery charger monitoring, weather info, environmental info, device charge and discharge, prediction and error report.

The characteristics of the modules:

The magic happens thanks to the modules, the heart of the VIVA system ; they allow you to customize the product according to your needs.

UNIQUE TECHNICAL FEATURES OF THE VERSION:

Total Control: Access via WIFI interface for displaying real time NBSP data and control.

InfoSensor: Environmental information from sensors such as temperature and humidity, charge and discharge devices, energy production, instantaneous and time-consuming consumption, autocheck with error prediction and reports.

VivaDirect: Direct access to information and control via WIFI close to the station.

VivaPortal: Remote management and control portal in the cloud.

Photovoltaic modules: Monocrystalline 120W power.

Battery pack: Type AGM / Capacity: up to 1.4 kWh.

USB charging : 3 ports 5W and 3 2W.

Wireless charging: Power 10W / Efficiency over 80%.

Cooling system: Air flow : 170 m³/h , temperature trigger: 38°C.

LED Lighting: backlight panel and neutral white dimmable LED lighting.

Optionals:

art. 311381 CO2 pollution sensor.

art. 311382 Vandal-proof presence sensor.

art. 311383 GPS position sensor.

art. 311384 Dimmable RGBW LED light with selectable system scenarios.

art. 311385 Custom print on the smart module.

art. 311386 RAL color painting on request.

| | |
|-------------------------|---------------------|
| Colour | Grigio e bianco |
| Accessories | USB , LED , IOT |
| Material | Acciaio e alluminio |
| Assembly | Tassell. |
| Installed | Si |
| Length | 1,75 mt |
| Alimentazione | Fotovoltaico |
| Internet HOTSPOT | Si |
| Altezza seduta | 47 cm |